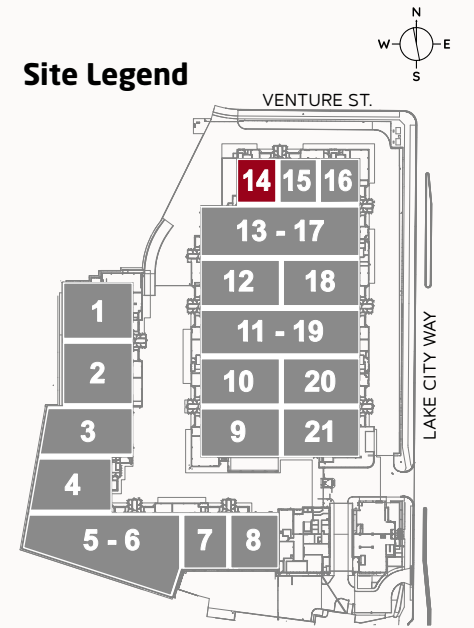
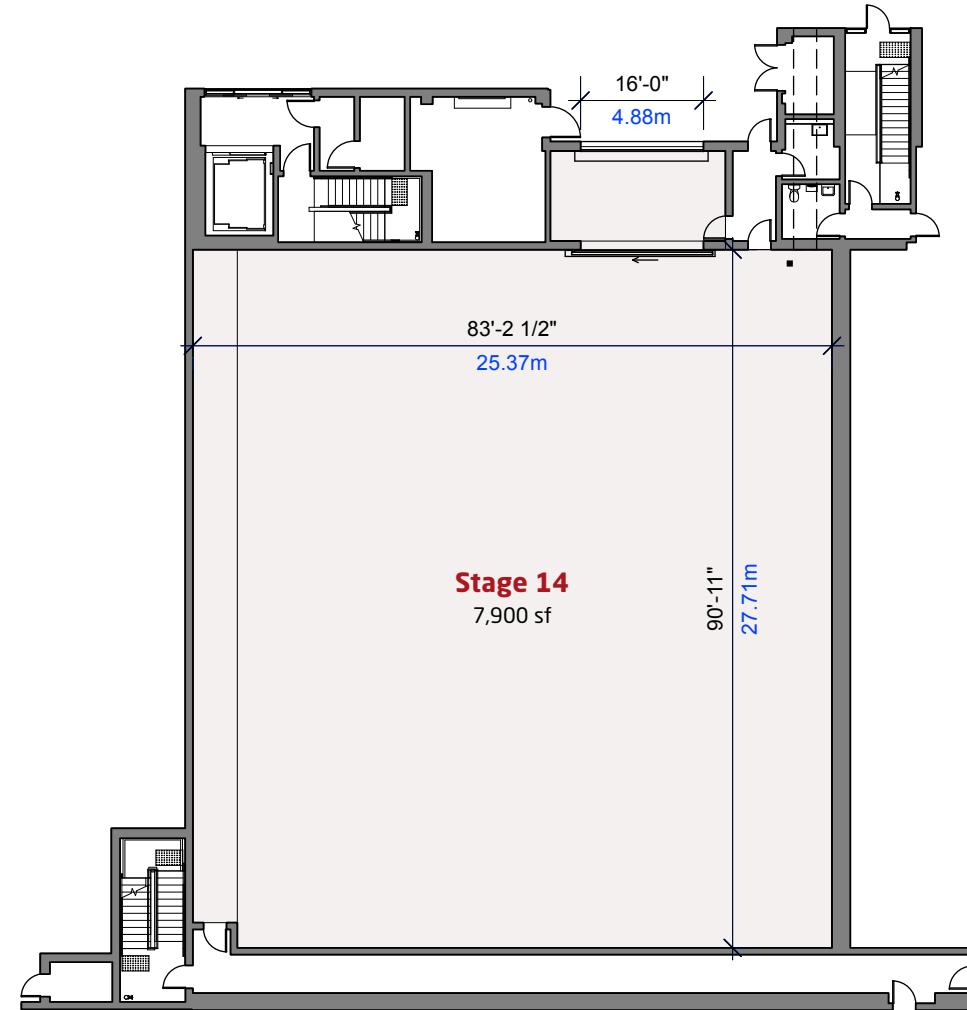


# Stage 14 Floor Plan



### Studio Features

- 7,900sf (733.93ms)
- 35'-2" floor to roof truss
- Loading Bay Doors 20'h x 16'w
- **Soundproofing**
  - ▶ Soundstage walls are isolated and fully blanketed with sound absorbing materials.
  - ▶ Concrete roof has sound absorbing material sprayed onto the ceiling.
  - ▶ 5/8" wood OBS sheets bolted to laser flat concrete floor to provide set anchoring and additional soundproofing.
- **Electrical**
  - ▶ 3 x 400 amp camlock disconnects, 1 on the studio floor, 2 in the adjoining Dimmer Room. Additional power is available.
  - ▶ 200 Amp electrical plug-in hook-ups for Base Camp trailers throughout the site.
  - ▶ LED lighting in soundstages and throughout the facility.
- **HVAC**
  - ▶ The entire facility is driven by electricity. Each soundstage is heated and air conditioned with a 40 ton capacity unit.
  - ▶ HVAC VRF (Variable Refrigerant Flow) system uses NO fossil fuels.
- **Slab Design Loads**
  - ▶ Stage 1 to 8 = 300 lbs/sf
  - ▶ Stage 9 to 21 = 500 lbs/sf
  - ▶ Studio lot asphalt 250 lbs/sf



Part of the Bridge Studios Group

OCT 31, 2025

### Roof Truss Loading Specifications

